



Parents' Guide



Peppa Pig Learn & Explore Tablet



INTRODUCTION

Thank you for purchasing the Peppa Pig Learn & Explore Tablet! This tablet includes six fun activities that teach language, math, logic and more. Explore and learn with Peppa Pig, her family and friends in a fun-filled adventure.



- | | |
|---------------------|-----------------------|
| ① LCD Screen | ⑧ Peppa Pig Button |
| ② Mummy Pig Button | ⑨ Activity Buttons |
| ③ George Pig Button | ⑩ Volume Button |
| ④ On/Off Button | ⑪ Arrow Buttons |
| ⑤ Letter Buttons | ⑫ Music On/Off Button |
| ⑥ Number Buttons | ⑬ OK Button |
| ⑦ Daddy Pig Button | |

INCLUDED IN THIS PACKAGE

- Peppa Pig Learn & Explore Tablet
- Parents' guide

WARNING

All packing materials such as tape, plastic sheets, packaging locks, removable tags, cable ties, cords and packaging screws are not part of this toy and should be discarded for your child's safety.

NOTE

Please keep this parents' guide as it contains important information.

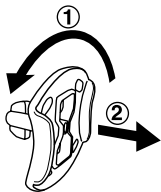
ATTENTION

Pour la sécurité de votre enfant, débarrassez-vous de tous les produits d'emballage tels que rubans adhésifs, feuilles de plastique, attaches, étiquettes et vis d'emballage. Ils ne font pas partie du jouet.

NOTE

Il est conseillé de conserver ce guide des parents car il comporte des informations importantes.

Unlock the Packaging Locks

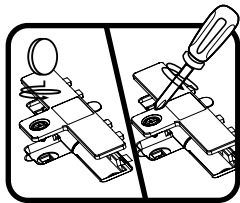


- ① Rotate the packaging locks 90 degrees counterclockwise.
- ② Pull out the packaging locks and discard.

INSTRUCTIONS

Battery Removal and Installation

1. Make sure the unit is turned **Off**.
2. Find the battery cover located on the bottom of the unit and use a coin or screwdriver to loosen the screw and open the battery cover.
3. Remove old batteries by pulling up on one end of each battery.
4. Install 2 new AA (AM-3/LR6) batteries following the diagram inside the battery box. (For best performance, alkaline batteries or fully charged Ni-MH rechargeable batteries are recommended).
5. Replace the battery cover and tighten the screw to secure.



WARNING:

Adult assembly required for battery installation.

Keep batteries out of reach of children.



ATTENTION :

Les piles ou accumulateurs doivent être installés par un adulte.

Tenir les piles ou accumulateurs hors de portée des enfants.

IMPORTANT: BATTERY INFORMATION

- Insert batteries with the correct polarity (+ and -).
- Do not mix old and new batteries.
- Do not mix alkaline, standard (carbon-zinc) or rechargeable batteries.
- Only batteries of the same or equivalent type as recommended are to be used.
- Do not short-circuit the supply terminals.
- Remove batteries during long periods of non-use.
- Remove exhausted batteries from the toy.
- Dispose of batteries safely. Do not dispose of batteries in fire.

RECHARGEABLE BATTERIES

- Remove rechargeable batteries from the toy before charging.
- Rechargeable batteries are only to be charged under adult supervision.
- Do not charge non-rechargeable batteries.

IMPORTANT : INFORMATIONS CONCERNANT LES PILES

Les piles fournies avec le produit permettent de tester le jouet en magasin mais ne sont pas des piles longue durée.

- Mettre en place les piles ou les accumulateurs en respectant les polarités + et -.
- Ne pas mélanger des piles ou des accumulateurs neufs avec des usagés.
- Ne pas mélanger différents types de piles : alcalines, zinc-carbone et rechargeables.
- Seules des piles du type recommandé doivent être utilisées.
- Ne pas mettre les bornes d'une pile ou d'un accumulateur en court-circuit (en reliant directement le + et le -).
- Retirer les piles ou les accumulateurs en cas de non-utilisation prolongée.
- Enlever les piles ou les accumulateurs usagés du jouet.
- Ne les jeter ni au feu ni dans la nature.

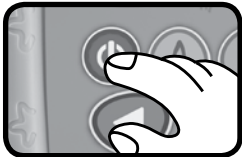
PILES RECHARGEABLES :

- Enlever, lorsque c'est possible, les accumulateurs du jouet pour les recharger.
- Les accumulateurs ne doivent être chargés que sous la surveillance d'un adulte.
- Ne pas tenter de recharger des piles non rechargeables.

PRODUCT FEATURES

1. On/Off Button

Press the **On/Off Button**  to turn the unit **On**. Press the **On/Off Button** again to turn the unit **Off**.



2. Volume Button

Press the **Volume Button**  to adjust the sound level.



3. Activity Buttons

Press any of the six **Activity Buttons** to learn and explore.



4. Letter Buttons

Press the **Letter Buttons** to learn letters, phonics and objects.



5. Number Buttons

Press the **Number Buttons** to learn numbers and answer number-related questions.



6. Character Buttons

Press the four **Character Buttons** to hear Peppa Pig and her family say playful phrases from the show.



7. OK & Arrow Buttons

Press the **Arrow Buttons** to navigate on the screen or to select an option, then press the **OK Button** to confirm your choice.



8. Music On/Off Button

Press this button to turn the background music **On** or **Off**.



9. Automatic Shut-Off

To preserve battery life, the **Peppa Pig Learn & Explore Tablet** will automatically shut off after several minutes of inactivity. The unit can be turned on again by pressing the **On/Off Button**.

NOTE

If the unit powers down or if the light fades out during play, please install a new set of batteries.

ACTIVITIES



1. Letter and Number Van

Press the **Letter Buttons** or **Number Buttons** to learn about letters, phonics and numbers with Freddy Fox and Mr. Fox.



2. Counting Stars

Help Emily Elephant count how many stars she has.



3. Letter Painting Fun

Press a letter to see what object Peppa Pig has drawn for each letter of the alphabet.



4. Music Time

Help Candy Cat host a music party by adding fun sound effects to the melodies with any number or character button.



5. Hide-and-Seek

Help Peppa Pig find out who hid behind the bush in a game of hide-and-seek with family and friends.



6. Picnic Time

Help Daddy Pig splash through muddy puddles by using the left and right **Arrow Buttons** to get to the family's picnic spot.

CARE & MAINTENANCE

1. Keep the unit clean by wiping it with a slightly damp cloth.
2. Keep the unit out of direct sunlight and away from any direct heat sources.
3. Remove the batteries if the unit will not be in use for an extended period of time.
4. Do not drop the unit on hard surfaces and do not expose the unit to moisture or water.

TROUBLESHOOTING

If for some reason the unit stops working or malfunctions, please follow these steps:

1. Please turn the unit **Off**.
2. Interrupt the power supply by removing the batteries.
3. Let the unit stand for a few minutes, then replace the batteries.
4. Turn the unit back **On**. The unit should now be ready to play again.
5. If the unit still does not work, install a new set of batteries.

IMPORTANT NOTE:

If the problem persists, please call our **Consumer Services Department** at 1-800-521-2010 in the U.S., 1-877-352-8697 in Canada, or visit our website vtechkids.com and fill out our **Contact Us** form located under the **Customer Support** link. Creating and developing VTech products is accompanied by a responsibility that we take very seriously. We make every effort to ensure the accuracy of the information, which forms the value of our products. However, errors sometimes can occur. It is important for you to know that we stand behind our products and encourage you to contact us with any problems and/or suggestions you might have. A service representative will be happy to help you.

Supplier's Declaration of Conformity

47 CFR § 2.1077 Compliance Information

Trade Name:	VTech®
Model:	5466
Product Name:	Peppa Pig Learn & Explore Tablet
Responsible Party:	VTech Electronics North America, L.L.C.
Address:	1156 W. Shure Drive, Suite 200 Arlington Heights, IL 60004
Website:	vtechkids.com

THIS DEVICE COMPLIES WITH PART 15 OF THE FCC RULES. OPERATION IS SUBJECT TO THE FOLLOWING TWO CONDITIONS: (1) THIS DEVICE MAY NOT CAUSE HARMFUL INTERFERENCE, AND (2) THIS DEVICE MUST ACCEPT ANY INTERFERENCE RECEIVED, INCLUDING INTERFERENCE THAT MAY CAUSE UNDESIRE OPERATION.

CAN ICES-003(B)/NMB-003(B)

CAUTION

Changes or modifications not expressly approved by the party responsible for compliance could void the user's authority to operate the equipment.

NOTE

This equipment has been tested and found to comply with the limits for a Class B digital device, pursuant to Part 15 of the FCC Rules. These limits are designed to provide reasonable protection against harmful interference in a residential installation. This equipment generates, uses and can radiate radio frequency energy and, if not installed and used in accordance with the instructions, may cause harmful interference to radio communications. However, there is no guarantee that interference will not occur in a particular installation. If this equipment does cause harmful interference to radio or television reception, which can be determined by turning the equipment off and on, the user is encouraged to try to correct the interference by one or more of the following measures:

- Reorient or relocate the receiving antenna.
- Increase the distance between the equipment and receiver.
- Connect the equipment into an outlet on a circuit different from that to which the receiver is connected.
- Consult the dealer or an experienced radio/TV technician for help.

Visit our website for more
information about our products,
downloads, resources and more.

vtechkids.com

vtechkids.ca

Read our complete warranty policy online at
vtechkids.com/warranty
vtechkids.ca/warranty

